

THE ANSWER TO HIGH-DENSITY LIVING IN **MIXED-USE BUILDINGS**

Quality of life thanks
to REGUPOL impact
sound insulation and
vibration isolation



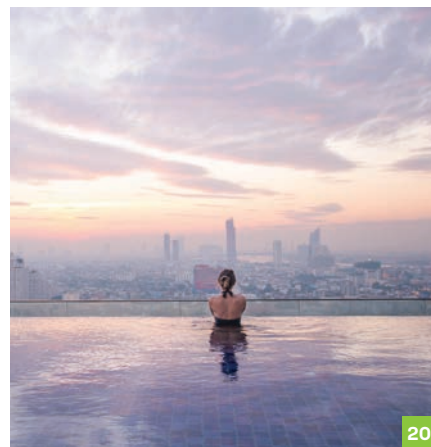
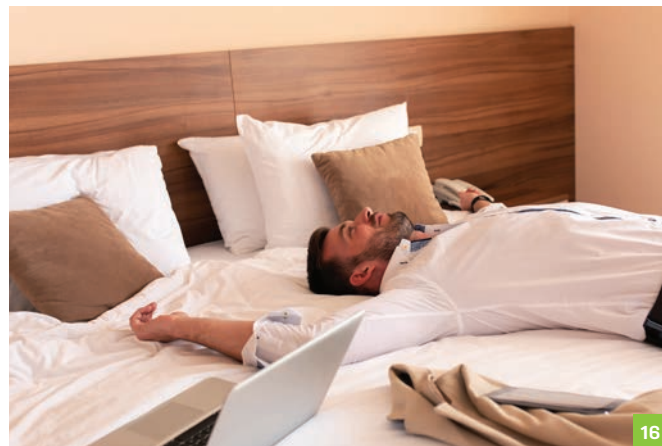
HOW DO YOU IMPROVE THE QUALITY OF **URBAN DEVELOPMENTS?** TOGETHER.

Urbanization is increasing. According to United Nations forecasts, seven out of ten people will live in cities by 2050. Since there is a huge shortage of space, intelligent building design is needed. The quality of populous environments can be significantly improved with the right acoustics.

Mixed-use concepts bring high-density tower blocks and space-saving neighbourhood developments to life. Close proximity of living, working, leisure activities, and utilities enable today's urban lifestyles. The creation of buildings that meet these needs is becoming more important for property owners and investors.

With the right sound insulation, meeting these different needs in a single building can be easily achieved. As an experienced partner, we will show you the right techniques and products to maximise living and working comfort across your international projects, advise you on individual properties, and help you meet standards and regulations.

KEY TOPICS AT A GLANCE



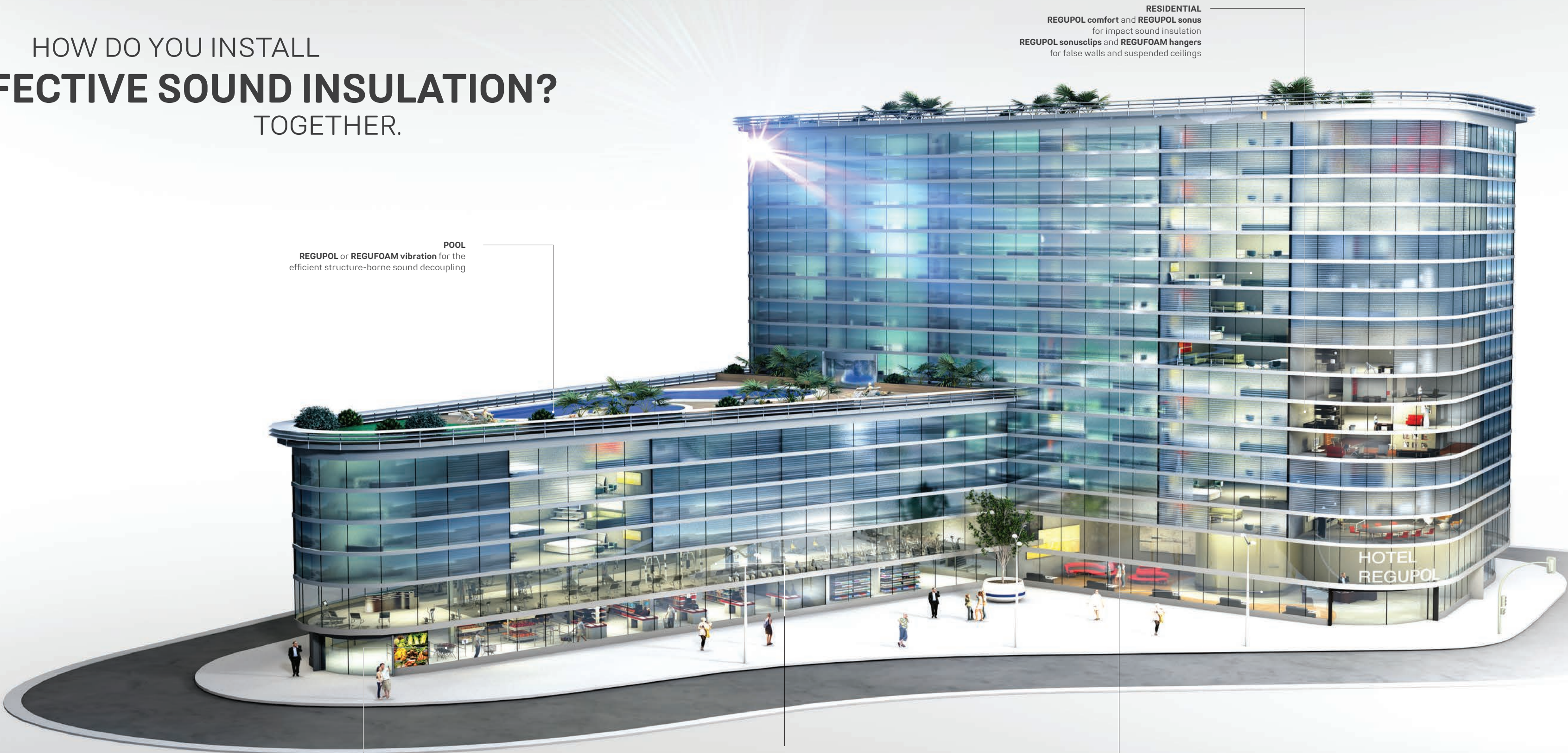
06 **The REGUPOL product range**
Your key to effective noise control

10 **Applications**
Our products are suitable for a wide range of applications

24 **Quality, Service, Sustainability**
Our quality, services and efforts to achieve sustainability

28 **REGUPOL Group**
Get a better insight into our company and international sales team

HOW DO YOU INSTALL EFFECTIVE SOUND INSULATION? TOGETHER.



RESIDENTIAL
REGUPOL comfort and REGUPOL sonus
for impact sound insulation
REGUPOL sonusclips and REGUFOAM hangers
for false walls and suspended ceilings

POOL
REGUPOL or REGUFOAM vibration
for the efficient structure-borne sound decoupling

FITNESS STUDIOS
REGUPOL sonusfit for structure-borne
sound and vibration protection

HOTELS
REGUPOL comfort and REGUPOL sonus
for impact sound insulation
REGUPOL sonusclips and REGUFOAM hangers
for false walls and suspended ceilings

SUPERMARKETS
REGUPOL or REGUFOAM sound
for impact sound insulation

Contact us

Detailed technical information about **REGUPOL**
can be found at www.regupol.com/aus/acoustics
Or speak to us in person: +61 2 4624 0050
acousticsales@regupol.com.au

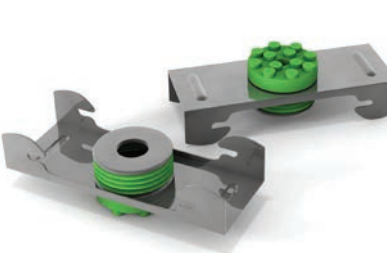
The **REGUPOL** product range



REGUPOL comfort:
Elastomer-based impact sound
insulation for various types of
floor design and screeds



REGUPOL sonus:
Cork/PU or rubber-based impact
sound insulation for screeds and
floor coverings



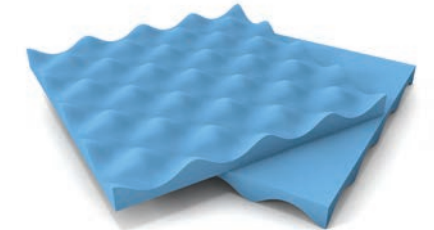
REGUPOL sonusclips:
Resilient sound isolation clips for
mounting drywall to ceilings
and walls



REGUFOAM hangers:
Highly efficient mountings for
suspended ceilings and pipe work,
fan coil units, air conditioners piping
ducts and fans



REGUPOL sounds curve:
Elastomer-based impact sound
insulation for various types of
floor build-ups including screeds
and timber floors



REGUPOL or REGUFOAM sound:
Elastomer-based impact sound
insulation for various types of floor
design and screeds that need to
meet the highest acoustic requirements



REGUPOL sonusfit:
Highly efficient fitness studio
soundproofing solutions
incorporating sports-specific
functional characteristics



REGUPOL or REGUFOAM vibration:
Effective solutions for vibration
isolation and structure-borne sound
decoupling

Acousticians rely on REGUPOL's expertise to help them meet acoustical requirements, thus ensuring the highest quality mixed-use buildings.

Quality mixed-use buildings require uncompromised versatility. With **REGUPOL**, there are virtually no limits to the ways mixed space can be used in buildings. No matter how small the space, apartments, hotels, offices, practices, shops and supermarkets, restaurants, fitness studios, pools or roof terraces, you don't need to compromise.

REGUPOL offers durable, innovative materials, system solutions, and on-site expert advice on international projects, realizing the use of space within buildings. Satisfied customers all over the world attest to **REGUPOL's** quality and experience. You can rely on them for your project too.

Your benefits:

- reliable planning support and product performance
- a broad range of products and system solutions enable versatile design solutions
- decades of experience

HOW DO YOU BUILD A HOME IN THE MIDDLE OF A CITY? TOGETHER.

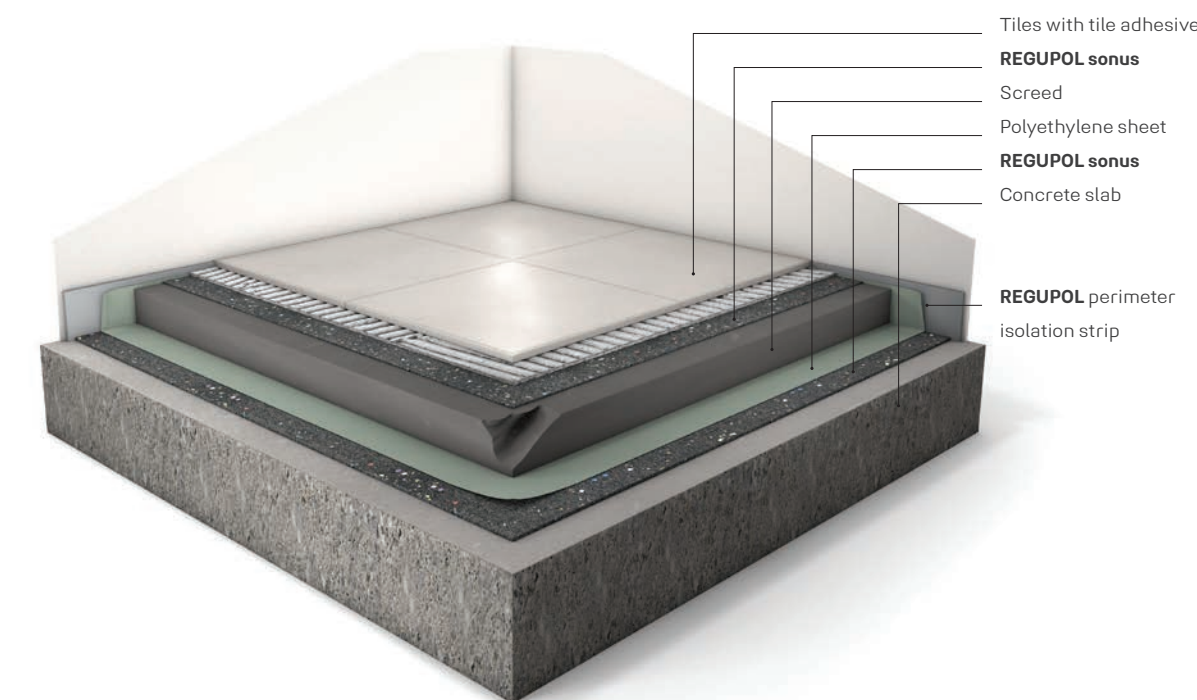


Increasingly, people are living in cities permanently. Growing urbanization inevitably leads to new challenges for noise mitigation that require intelligent solutions.

Quality of life in residential and mixed-use buildings can be improved through good acoustics. Depending on your specific situation, construction methods, and project stage, we can help recommend the right concept and **REGUPOL** products for your needs. The more flexible and versatile these solutions are, the more sustainable the result. With our experts at your side, designing a wide variety of solutions and testing them for cost-effectiveness is easily achieved.

The **REGUPOL sonus** range includes both smooth and profiled versions that make designing specific underfloor solutions, including bonding technology, as well as a wide range of under-screed impact sound insulations, easy. **REGUPOL** products are tested to ISO and ASTM standards and can also be tailored to the needs of your specific projects.

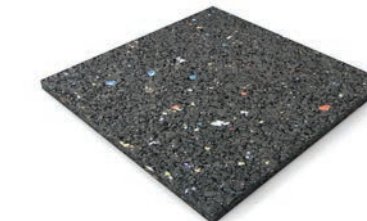
The **REGUPOL comfort** range is especially attractive to customers in Europe. Thanks to CE certification, it can be installed with confidence throughout the European Economic Area. Every product is tested according to ISO standards and features minimal thickness combined with high impact sound reduction.



REGUPOL comfort



REGUPOL sonus core



REGUPOL sonus multi



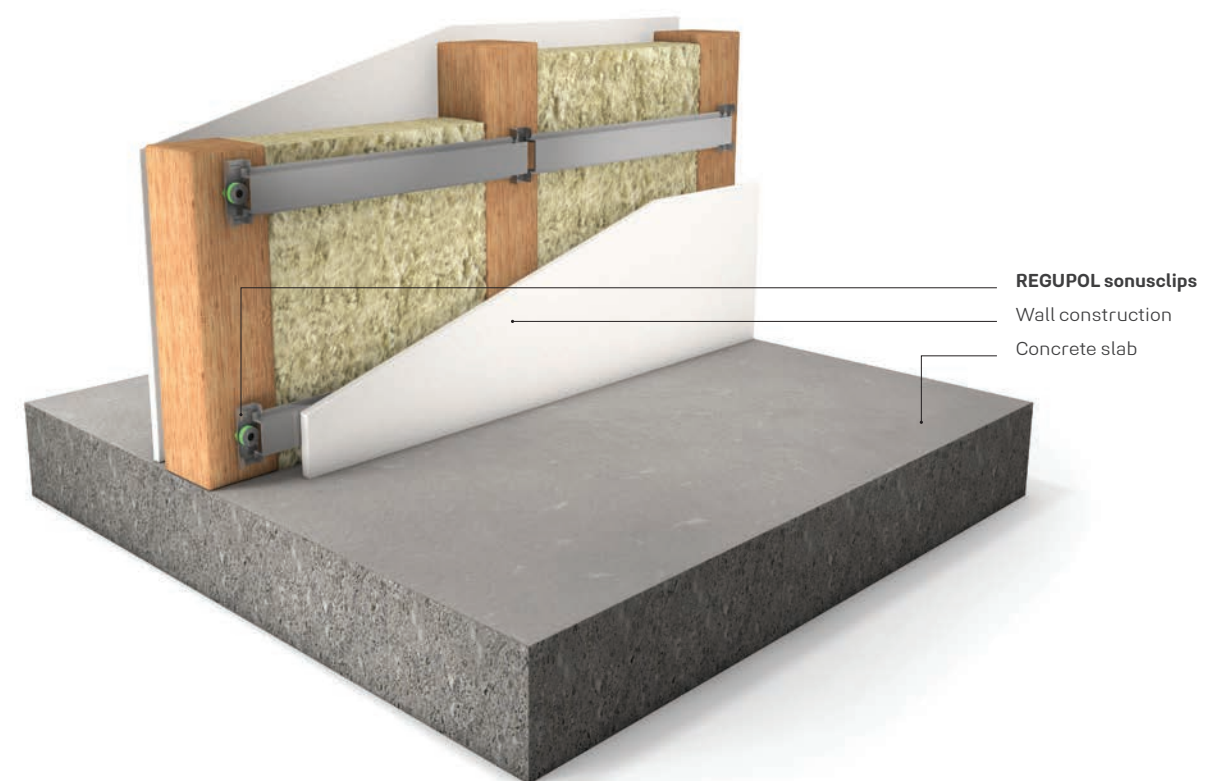
Our tip:

Ask us about the system components – such as adhesives and primers – suitable for each individual **REGUPOL** product. Our experts are glad to support you.

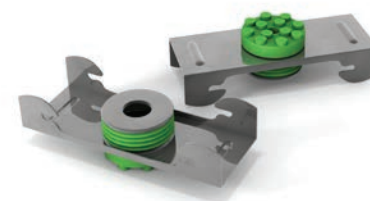


When it comes to effectively reducing airborne noise between rooms, decoupled elastic false walls provide an excellent globally proven solution. With **REGUPOL** legal and contractual acoustic requirements can be met relatively easily.

REGUPOL sonusclips stop structure-borne noise bridging the dry wall and the false wall. With these easy-to-install rubber and metal fasteners can be achieved excellent acoustic building values even where little wall mass is available – something that offers acoustic technicians and architects alike a clear advantage when it comes to structural flexibility.



REGUPOL sonusclips



HOW DO WE CREATE A CITY OF SHORT DISTANCES? TOGETHER.

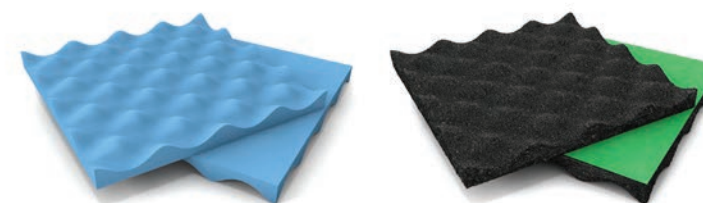
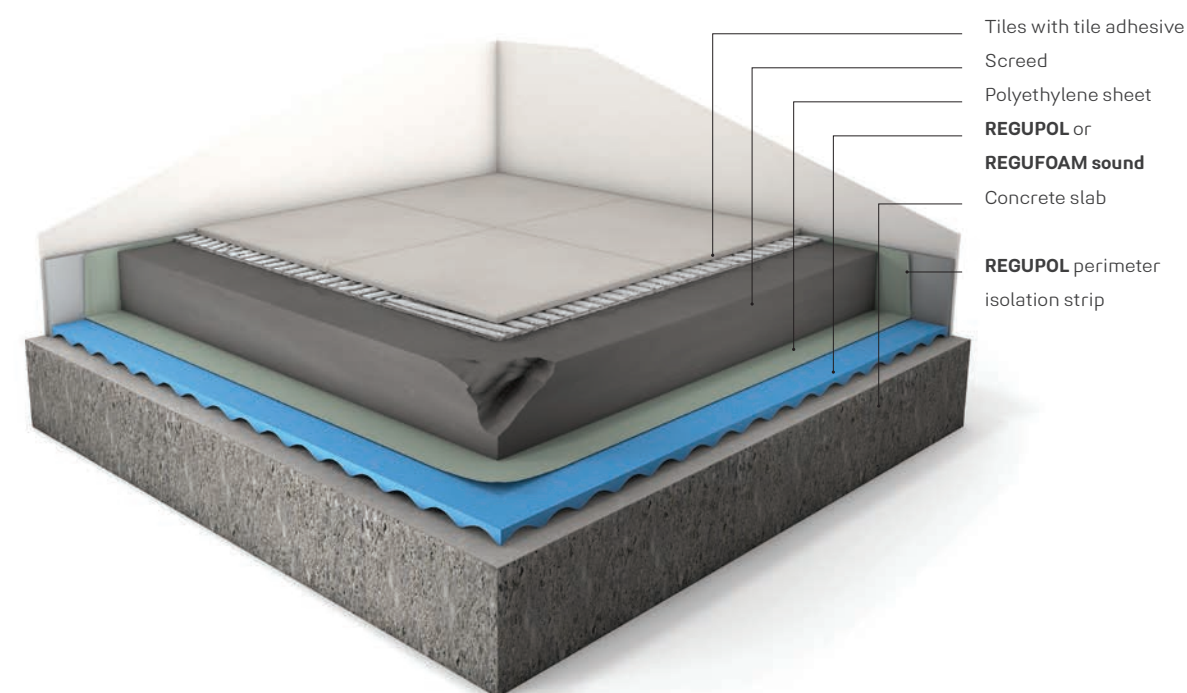


In highly populated neighborhoods and multi-use buildings, convenient access to goods and services is a major issue. This comes as the result of demographic change and the reduced mobility it entails.

Easy access to stores improves the quality of residents' lives considerably. However, it also requires improving the acoustic performance of buildings so that residential and commercial buildings can coexist peacefully. Especially where the delivery and loading of goods outside opening hours is concerned.

To effectively reduce low-frequency structure-borne noise as well as noises being emitted by trolleys and trucks, the experts at **REGUPOL** have developed **REGUPOL** and **REGUFOAM sound**. These highly resilient screed insulation underlays can be used under heavy screeds and slabs.

Our portfolio of solutions ensures reliable building design in this sensitive application. What is more, **REGUPOL** or **REGUFOAM sound** are the right choices for a host of other applications including cinemas, theatres, libraries, workshops and vehicle accessible areas in factory buildings where particularly noisy activities need to be isolated from quiet spaces in residential and commercial buildings. Ask the acoustics experts.

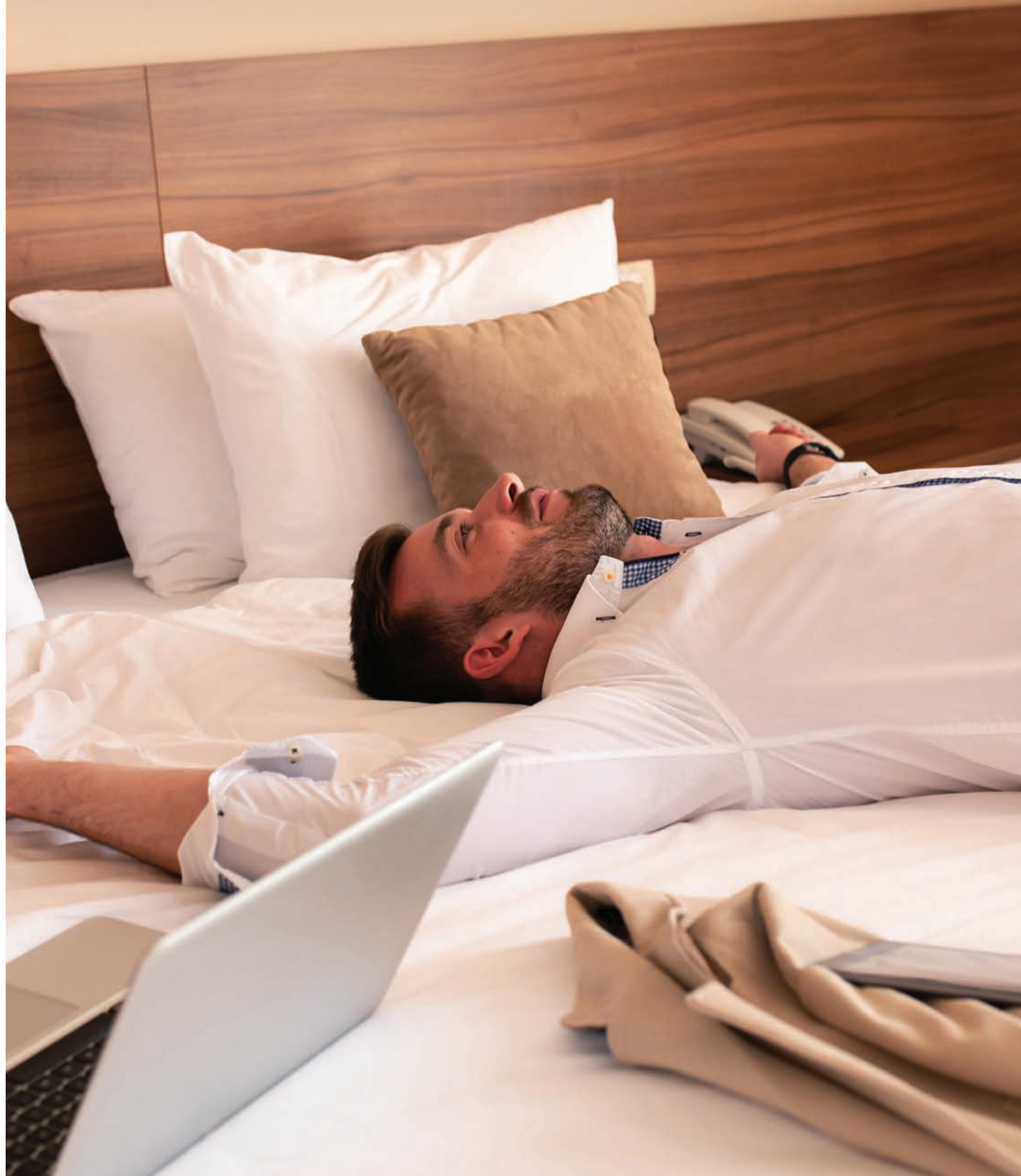


REGUPOL and **REGUFOAM sound** product ranges are tested according to ISO standards and offer maximum sound reduction at low thicknesses.

Our tip:

All **REGUPOL** and **REGUFOAM sound** impact insulation membranes are tested in Germany and certified throughout the EU – their quality is recognised worldwide.

HOW DO YOU ENSURE RELAXED URBAN LIFESTYLES? TOGETHER.



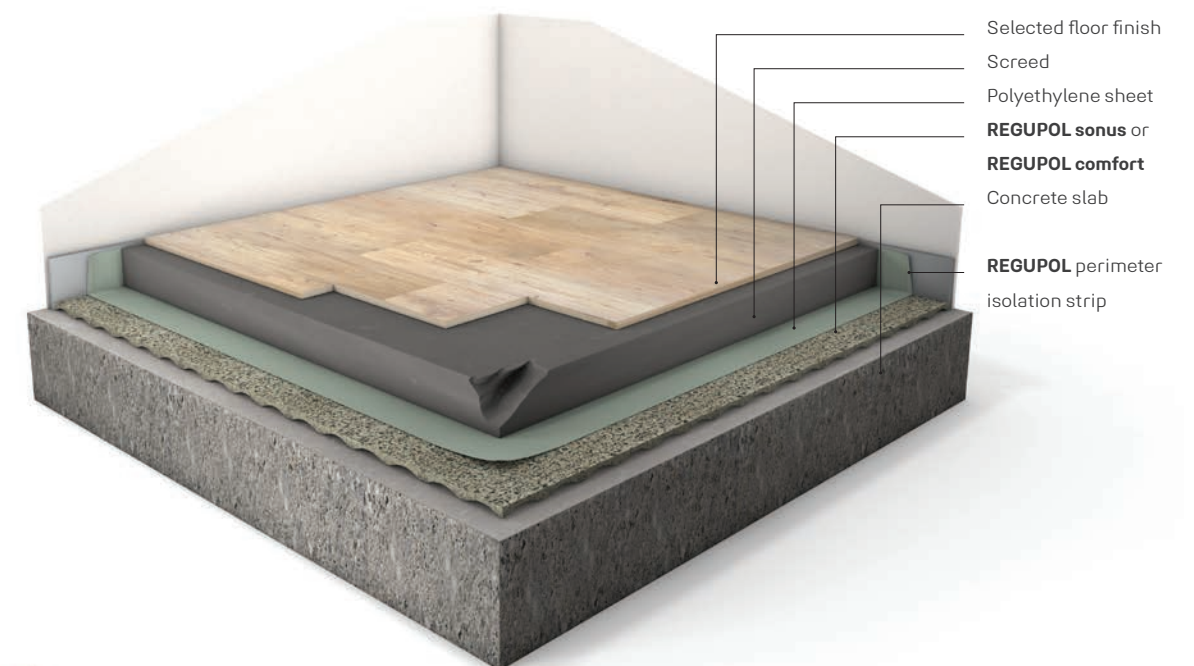
For city hotels, the key driver is a central location and close proximity to transportation. Simultaneously, hotels need to guarantee their guests peace and quiet, especially in an attractive mixed-use environment, where the hotel itself is a source of noise.

Strictly speaking, every hotel is a mixed-use concept in its own right. In addition to the rooms, which need to offer guests maximum peace and quiet, hotels combine elevators, stairwells and technical infrastructure, receptions, bars, meeting rooms and canteen kitchens in a very small space. When located in a tower or other mixed-use building, further noise factors come into the mix.

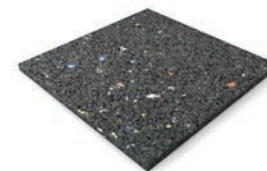
As a specialist designer, you are faced with the task of mastering the complex interplay of airborne, impact and structure-borne noise from a wide variety of sources.

As a long standing partner, we offer you reliable planning support, high performance products, and a wide range of solutions that free up your design options.

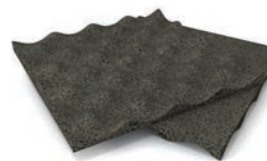
With the **REGUPOL sonus** or **REGUPOL comfort** product ranges, we offer you a comprehensive portfolio of under screed and underfloor impact sound solutions. Plus, **REGUPOL sonusclips** and **REGUFOAM hangers** enable you to retrofit drywall or existing constructions with airborne and impact sound insulation.



REGUPOL sonus core



REGUPOL comfort



REGUPOL sonusclips and REGUFOAM hangers



Good to know:

We would be glad to provide you with detailed technical information about **REGUPOL**.

Just call or email us:

REGUPOL Australia +61 2 4624 0050
acousticsales@regupol.com.au

HOW CAN WE INCORPORATE GYMS INTO MODERN BUILDINGS TOGETHER.

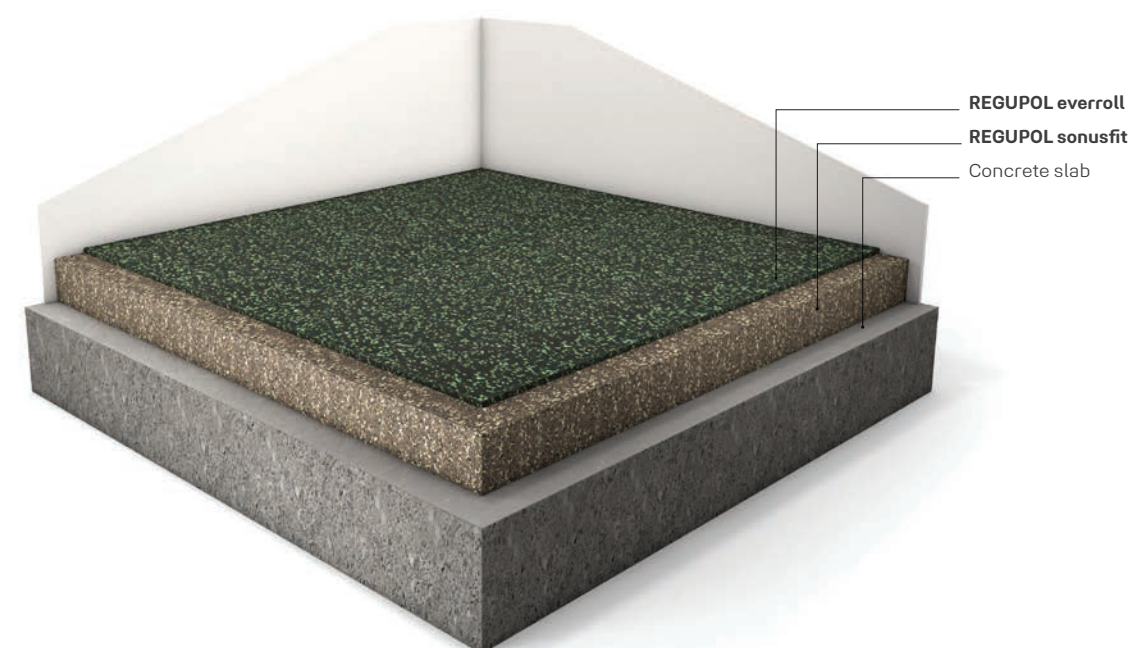


Today there are more and more gyms conveniently located in hotels, multi-residential apartments, mixed-use developments and commercial buildings. This growing trend of having a gym close by, especially those offering 24 hour accessability, does pose a threat to the acoustic amenity of the adjacent buildings or living spaces.

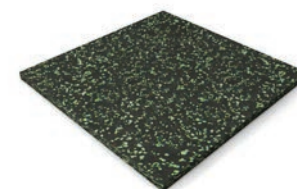
Free weights being dropped onto gym floors can cause a great amount of acoustic and vibration disturbance for occupants situated in nearby zones. Plate-loaded machines can have a similar negative effect, albeit to a lesser extent. Vibrations within gyms can be transmitted through the building's structure and can cause regenerated noise in adjacent areas.

More traffic and activity in such buildings will lead to more noise sources. At **REGUPOL** we tailor sound insulation designs to each application, based on its type, scope, intensity, and building structure.

As an expert in acoustic solutions and a leading supplier of sports and fitness flooring, **REGUPOL** offers solutions which meet the highest requirements of both sectors. The **REGUPOL everroll** and **REGUPOL sonusfit** product ranges combine functional sports properties with highly effective sound insulation.



REGUPOL everroll



REGUPOL sonusfit



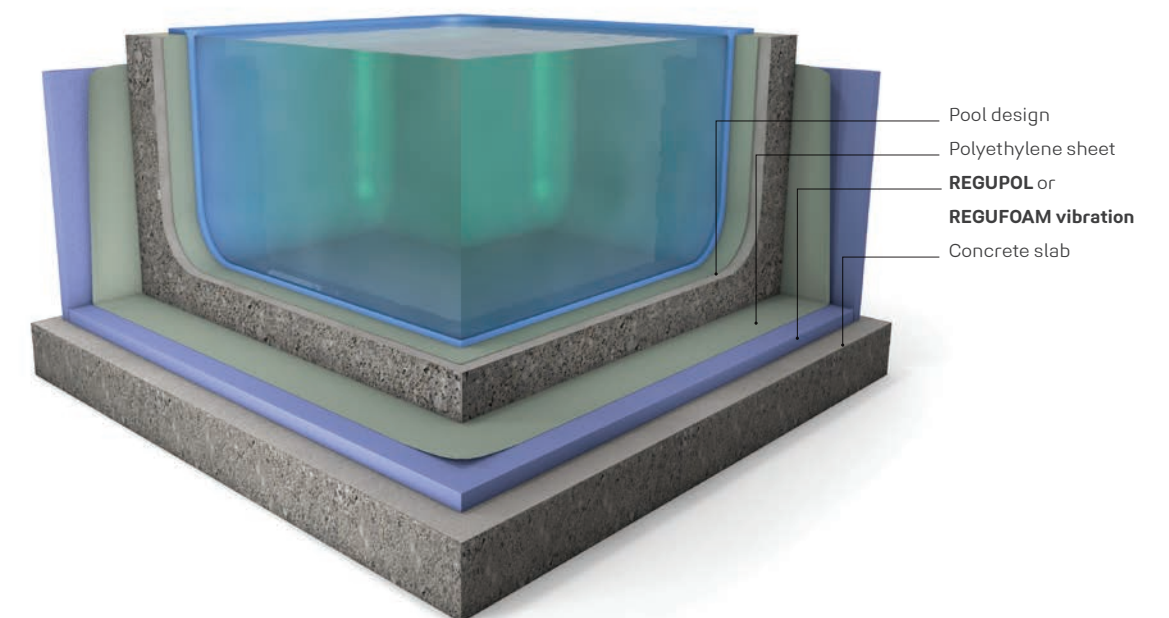
HOW CAN WE ISOLATE VIBRATIONS OF POOLS? TOGETHER.



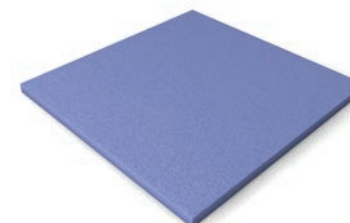
Pools make a great addition to various types of mixed-use buildings, but they need to be properly insulated.

Pool noise is generated by swimmers pushing off from the edge of the pool or jumping into the water. Busy pools can be very noisy. But even a few leisurely laps can compromise sophisticated mixed-use concepts.

Part of our comprehensive range, which also includes approved and externally monitored specialist solutions, **REGUPOL** and **REGUFOAM vibration** products can meet all the prerequisites of precision tailored solutions and reliable design in this sensitive area of application. Ask the experts for detailed advice on selecting the right product and elastic mounts.



REGUFOAM vibration



REGUPOL vibration





HOW ARE SOLUTIONS EASY AND INSPIRING? **TOGETHER.**

We've got it covered.

REGUPOL is more than sports and multi-purpose surfaces. More than our acoustic underlayments. And more than our state-of-the-art track and field surfaces. For over 65 years, providing solutions and delivering exceptional customer service has been our business. We understand that paying attention to the details is critical from the start of any project. Making changes later means inconvenience and additional expenses. We sweat those details so you don't have to.

Because we invented the technology to recycle end of life tyres into unique products, you benefit from decades of experience and expertise that only we can offer. That means the right information, advice, and answers when you need them, along with products that have been refined, tested, and retested over the years by our R&D team to deliver precision performance that will not disappoint. It is all accomplished with manufacturing that meets the highest quality standards with the strictest environmental requirements.

Delivering results, developing leaders worldwide

We have grown steadily since 1954 – new products developed, new subsidiaries established and new locations added.

Today, **REGUPOL** is still a family enterprise, with third and fourth generations currently working in company management. We have eleven offices in seven countries, all serving as epicentres for innovation, ingenuity, and community.

Behind every **REGUPOL** product, there is a talented team that works together, across the globe, to create performance solutions from reclaimed materials that deliver durability and protection where you need it most without sacrificing sustainability. Whether used to protect surfaces and optimize load transport or to dampen sound and vibration, **REGUPOL** gets it done. We deliver with a level of product, customer service, and investment that only the inventor can offer.

No matter the customer—we aim to make their experience easy and inspiring, at an only-at-**REGUPOL** value.



**MADE IN
GERMANY**



Ask the experts about the best solution for your project.

REGUPOL Australia +61 2 4624 0050
acousticsales@regupol.com.au

HOW DO YOU BECOME MORE ENVIRONMENTALLY FRIENDLY? TOGETHER.

Caring about the environment is part of the REGUPOL core mission. When it comes to how we conduct our business and develop our products, we think long term. We ask ourselves: How will our actions today impact tomorrow's world? We strive to protect and sustain our environment every step of the way, from development and production to customer use and disposal.

On the road, tyres eventually wear down or sustain irreparable damage. But, in the environment, tyres can last forever. They are nonbiodegradable, unable to be compacted like plastic or metal, and maintain their shape. Because of their sheer size and impenetrable rubber compound, tyres are among the most problematic sources of waste we face today.

In the 1950s, polyurethane foam was new and very expensive. Instead of using all of the material produced, a considerable quantity was disposed. Our company was founded in 1954 to reprocess this wasted material into composite foam. Recycling is in our DNA.

How sustainable are REGUPOL products?

The circular economy works when recycled products compete directly with new products – we have been proving this for 65 years. **REGUPOL** products are typically made from 75% to 95% recycled materials, as are our sports mats. However **REGUFOAM** products are made from genuine raw materials.

What standards and legal requirements does REGUPOL meet?

Our company has been fully DIN EN 14001 certified since 1997 and will remain so. In addition, our products and mats comply with paragraph § 45 II No. 2 of the German draft bill on recycling management. We hope that the clearly formulated regulation will help make government action more sustainable.



What is sustainable about our human resources policy?

All our staff in Germany are paid according to a chemical industry-wide collective agreement. We are a recognised provider of insulation solutions and attach particular importance on training, which is why a large number of trainees undergo their training in-house.

New Life: From the disposing to a recycling economy

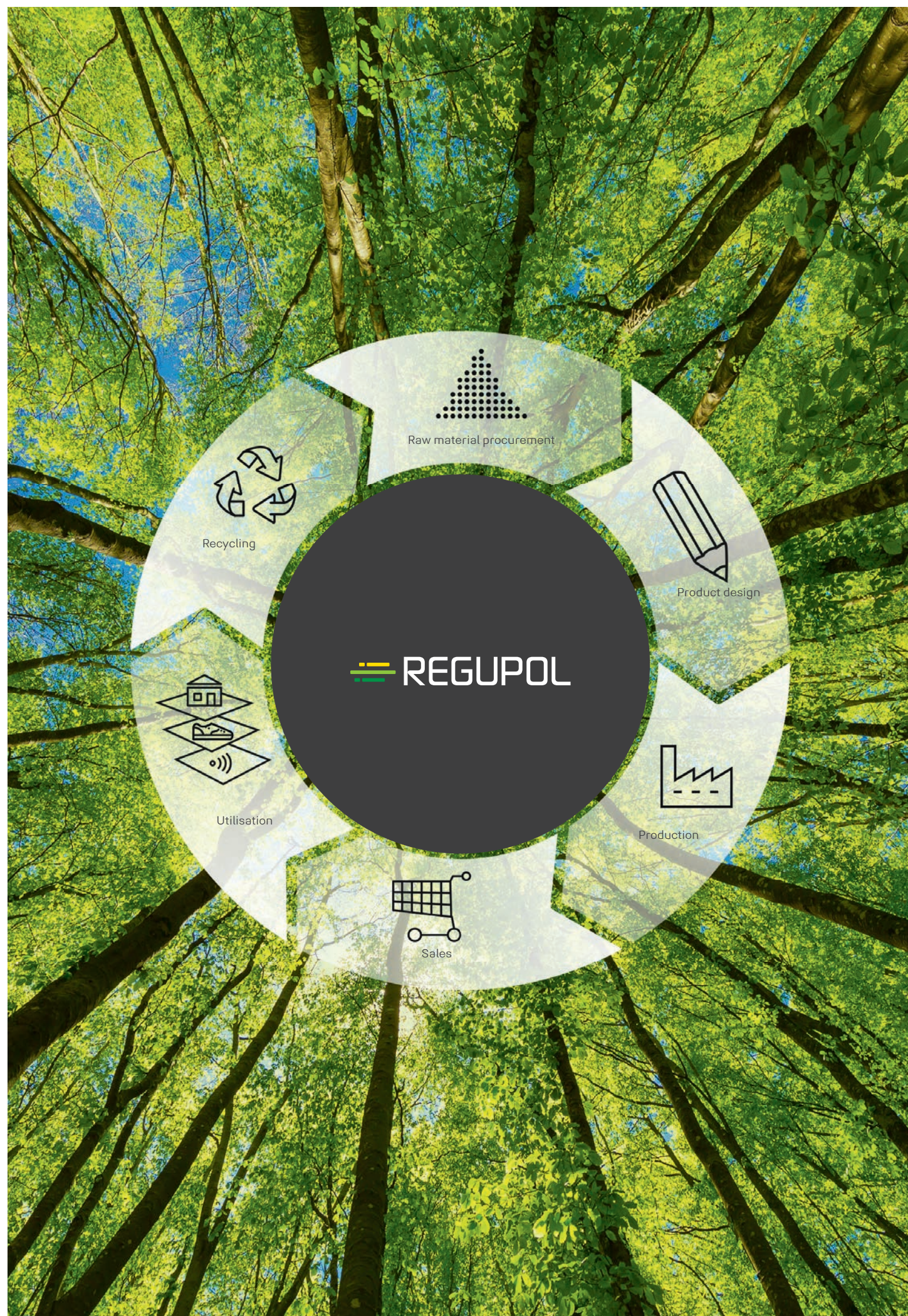
REGUPOL is a founding member of the "Initiative NEW LIFE" and commits to an optimal recycling economy, together with the other member corporations. Jointly, the members want to point out the advantages of recycling products from ELT (End-of-Life-Tires) and motivate to act sustainably. More about the initiative: www.initiative-new-life.de

What is next?

We still have a lot to do. We look forward to the continued development to our take-back policies for our products and reprocessing them. This will significantly extend the useful life of our products and consume far fewer natural resources. Accompany us.

REGUPOL's CO₂ balance sheet

In 2016, we partnered with the NRW Efficiency Agency to create a CO₂ location balance sheet, showing our total greenhouse gas emissions as CO₂ equivalents. We are on the right track.





HOW DO YOU GET TO THE TOP? **TOGETHER.**

When you partner with REGUPOL, you become part of a community with a shared goal of leading with excellence and innovation. Our path to success has always been rooted in product innovation and great service, with an eye on the future. We transform over 90,000 tons of high-quality recycled materials every year to create products that meet and exceed industry standards.

Over the course of our 65-year journey to become a leader in our category of building materials, we have built up a wealth of expertise and forged long-term customer partnerships in 132 countries worldwide—like sprint legend Usain Bolt, who made history on our blue **REGUPOL** running track in Berlin's Olympic Stadium in 2009 when he set two world records.

"There's nothing like running on REGUPOL. To me, REGUPOL equals gold. In more ways than one." - Usain Bolt

We've got it covered.

700 employees

11 locations worldwide

90.000 tons of high-quality recycled materials per year

132 countries with satisfied customers





REGUPOL Australia Pty. Ltd.

155 Smeaton Grange Road
Smeaton Grange NSW 2567
phone +61 2 4624 0050
acousticsales@regupol.com.au

REGUPOL BSW GmbH

REGUPOL America LLC

REGUPOL Acoustics Middle East FZE

REGUPOL Schweiz AG

REGUPOL Zebra Athletics LLC

BSW Shanghai CO. LTD.

www.regupol.com.au